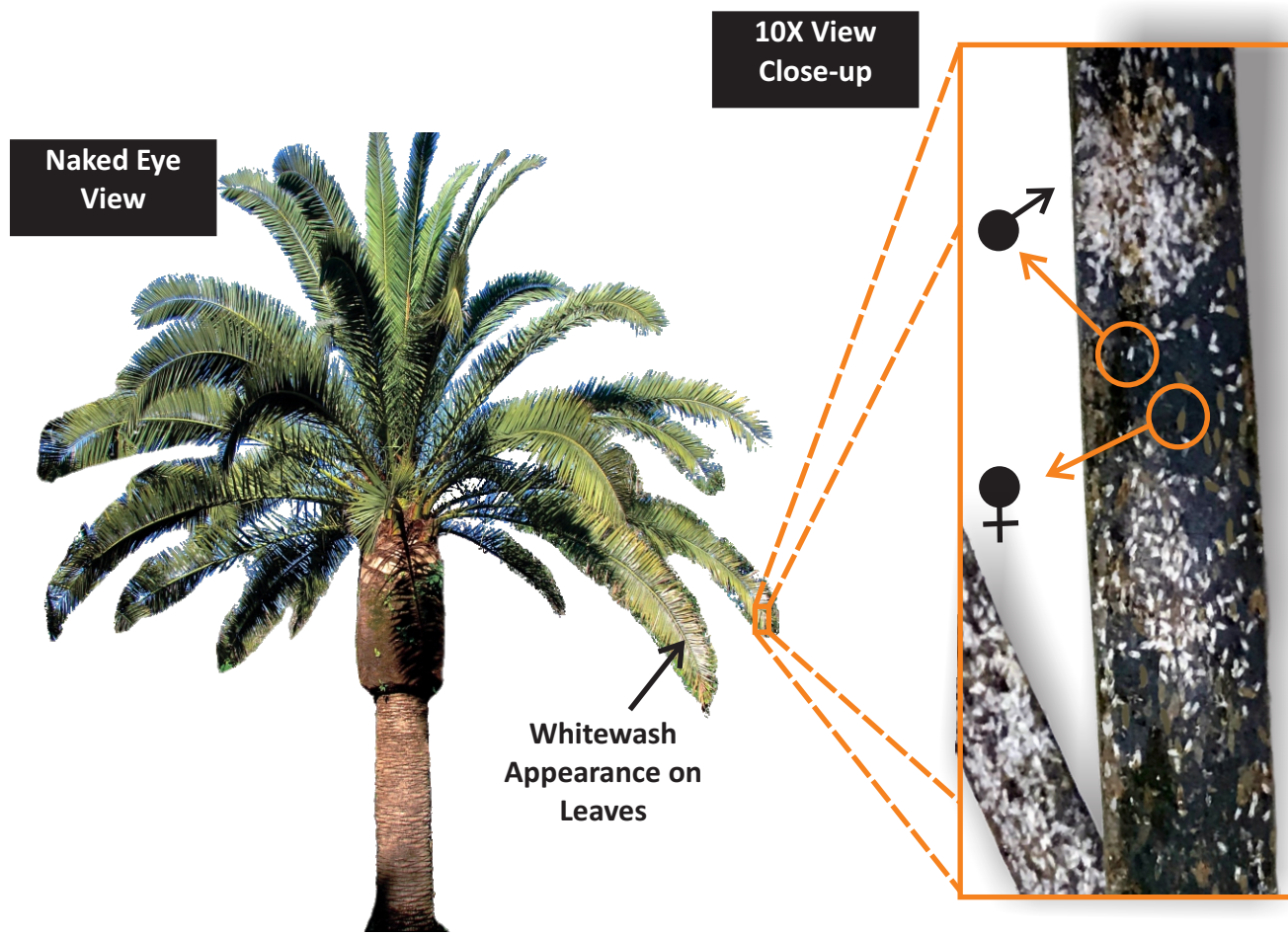
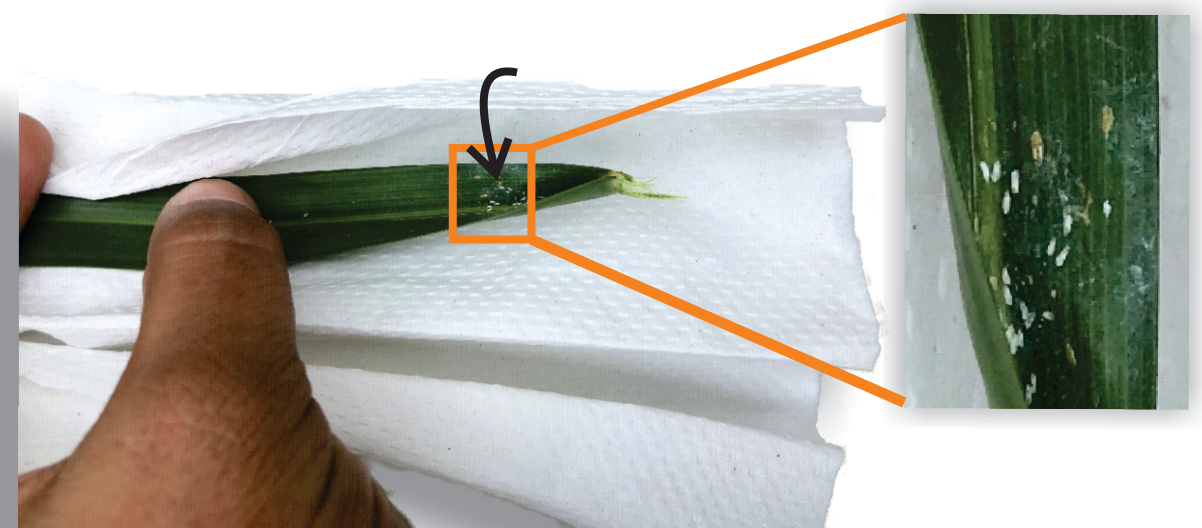


Field Guide for Phantasma Scale

The infestation of *Fiorinia phantasma* on *Phoenix canariensis*, Canary Island date palm in Miami



Initial infestation hidden in a fold of upper side of palm leaf

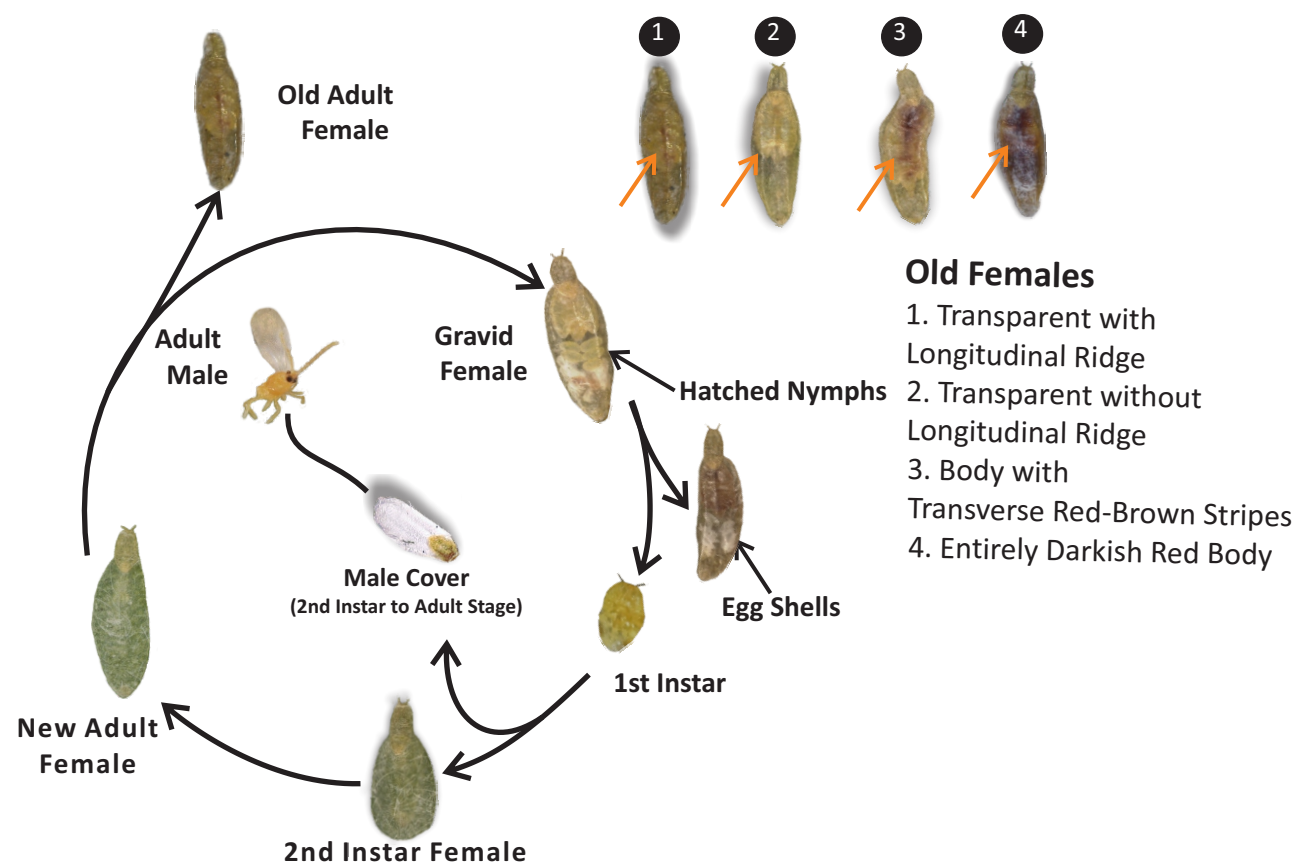


Leaf of *Dyopsis lutescens*, areca palm

Comparison with other closely related species in Florida



Fiorinia proboscitaria *F. phantasma* *F. fioriniae* *F. theae*



Comparison with other common species of armored scales and mealybugs on palms in Florida



Potential host plants of phantasma scale

- | | |
|---|--|
| <i>Cocos nucifera</i> (Coconut tree) | <i>Phoenix canariensis</i> (Canary Island date palm) |
| <i>Cycas revoluta</i> (sago palm) | <i>Phoenix reclinata</i> (Senegal date palm) |
| <i>Dyopsis lutescens</i> (areca palm) | <i>Phoenix roebelenii</i> (pygmy date palm) |
| <i>Ligustrum japonicum</i> (wax-leaf privet) | <i>Pittosporum tobira</i> (Japanese cheesewood) |
| <i>Livistona chinensis</i> (Chinese fan palm) | <i>Tahina spectabilis</i> (tahina palm) |
| <i>Nypa fruticans</i> (Nipa palm) | <i>Wodyetia bifurcata</i> (foxtail palm) |

For more details please see the reference below:

Ahmed, M.Z., Miller, D.R., Rohrig, E.A., Hodges, G.S., Roda, A.L., McKenzie, C.L., & Osborne, L.S. 2021 Field Report and Survey of *Fiorinia phantasma* (Hemiptera: Diaspididae), Potential Pest of Palms, and Ornamental Plants in the United States. *Journal of Integrated Pest Management* 12(1): 33; 1–10

